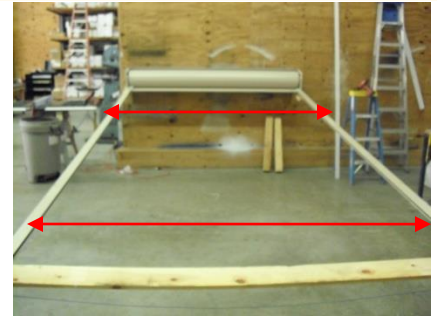


Step 1

- **NOTE: FIRST REMOVE ALL PACKING**
- Install shutter frame and housing , making sure the guiderails are not skewed and equal widths are kept the whole way down the length of rails.



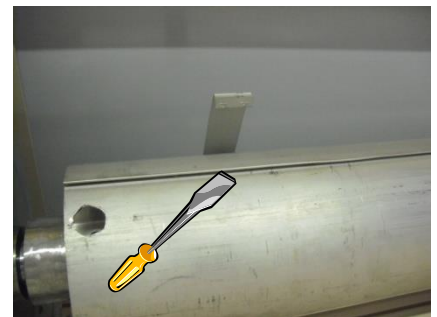
Step 2

- Run shutter down completely so blades can be detached from axle , making sure the rope in the baseslat does not get tangled



Step 3

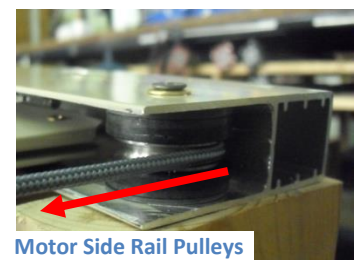
- Detach all the t-straps from axle and rest the curtain in the back of the box.



Detach T-strap using flat blade driver

Step 4

- Run rope from the baseslat through the pulley which are on the ends of the guiderails.
- Motor side rope goes around far side of the pulley then across to the pulley side of the shutter.
- Pulley side rope goes around the inside of the pulley on the top section then up the rail. And the motor side cord goes on bottom section of pulley then up the rail.



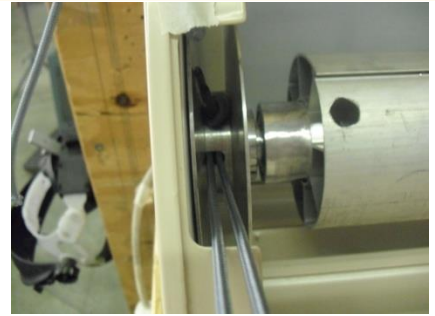
Motor Side Rail Pulleys



Pulley side Rail Pulleys

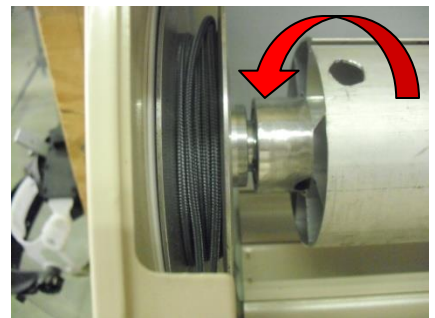
Step 5

- Once rope is ran up rails using a fish tape and rope is completely pulled tight begin to tie rope to pulley using the preset hole in the inside of the large pulley. Keep in mind to keep the rope straight when coming through the pulleys in the endcap pin.



Step 6

- Now using the motor run up all the extra rope around the pulley by rotating the axle as if the shutter was being run down or spinning axle towards back of the housing.



Step 7

- Once all extra rope is wound around pulley, continue to spin axle in the downwards motion counting the axle revolutions for **13 more times** which will apply tension to the mechanism.



Step 8

- Re attach shutter to axle with t-straps and finish off installation of shutter remembering to set limits .

