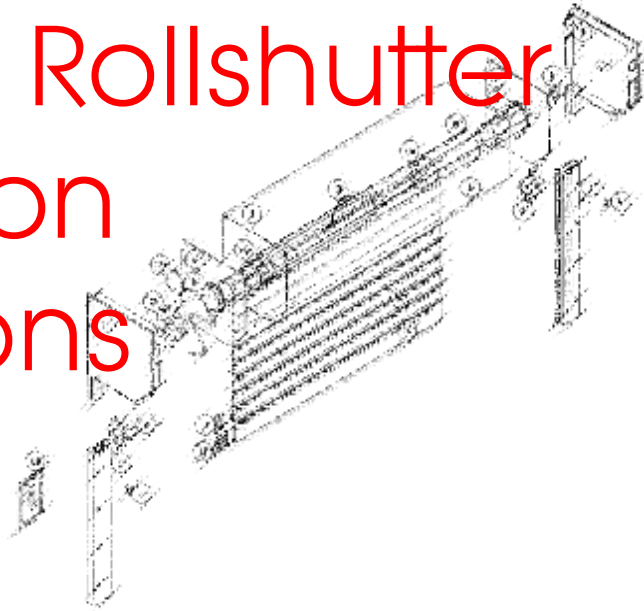


General Rollshutter Installation Instructions



This manual is provided only as a quick reference guide, and is not for the sole purpose of every application and or every variance of shutter, for more help with installation instructions please contact your local sales representative.

Amazig Roller Shutters *assumes no responsibility for loss or damage resulting from improper installation. Check local building codes before installation. For hurricane rated shutters follow: Engineering Installation Instructions listed under individual Alutech products on www.floridabuilding.org.*

All electrical connections should be made in accordance with the N.E.C., by a

Getting Started

Tools Needed:

1. Electric Drill
2. Level Set
3. Misc. Hand Tools
4. Caulk Gun
5. Misc. Drill Bits
6. Carpenters Knife
7. Wire Strippers, misc. elec. supplies



CHECKING YOUR SUPPLIES

Your shutters come professionally packed for safe shipping. It's your responsibility to inspect for damages immediately. Indicate on the freight bill any visible damage to cartons. Be sure the number of boxes you sign for matches the number you receive.

Check your contents:

For every installation you should have:

- 1 - Shutter box
- 1 - Curtain
- 2 - Guide or side rails,
- 2 - Pack out – angle or tubing (if required)
- 1- Accessories bag, packed inside the shutter box



YOU WILL NEED ANCHORS

You will need mounting hardware depending on what type of structure you're installing the rolling shutter. For the best wall anchor for your installation please refer to our engineering drawings for each application. You can find these on our website or call us directly for help.

Recommended:

WOOD INSTALL NON RATED SHUTTERS: #10 x 2" Wood Screw

CONCRETE INSTALL NON RATED SHUTTERS: ¼" x 2" Tapcon Concrete anchors

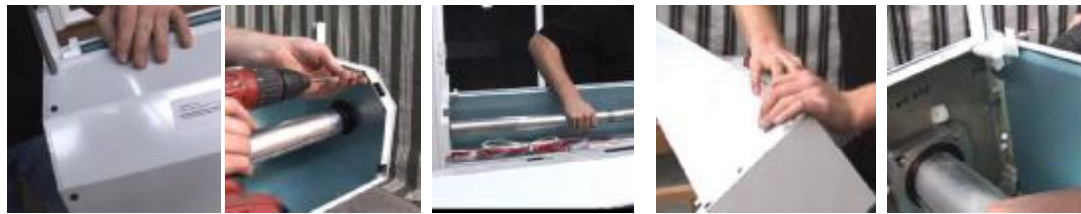


PREPPING THE SHUTTER

It's important to take care during prep and installation that painted surfaces aren't scratched and that the components aren't damaged. Remove front hood cover of the shutter box. There's a protective film on the hood and the box. It can be removed at this point or after final installation. Additional accessories will be found loose in the shutter box. Also check the measurement of shutter to make sure everything is all right.

Prepping the shutter box:

1. Remove front cover, by taking out 4 – ¼" tek screws
2. Remove screw holding 2 safety plates to gain cap access
3. Remove accessories and contents from inside
4. Peel protective film from shutter box and cover
5. Drill 2 – ¼" holes in back lip of side caps for mounting shutter box back to structure

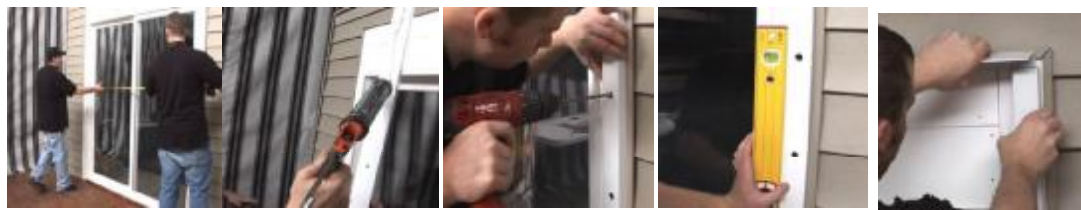


INSTALL PACK OUT AND RAIN CAP

At this point it's a good idea to double check measurements of the shutter box to insure correct placement of pack out or guide rails. Checking measurement of box is imperative when installing multiple shutters.

Installation of pack out:

1. Measure and mark placement of side pack out
2. Back caulk the back of side pack out, be aware to cover around the mounting holes
3. Attach side pack out with a single screw, and then check that it is plumb and square. Continue adding the remaining fasteners. Leaving top screws out or loose at this point.
Whenever an installation requires a pack out, a rain cap is also needed.
1. The rain cap sits on top of and slips in behind the pack out. At this point you can secure the top screws to tighten rain cap in.



PREPPING FOR ELECTRICAL HOOK UP

Only use if motorized shutter

All electrical work should be performed by a licensed electrician.

All electrical connections should be made in accordance with the N.E.C., by a qualified, licensed electrician.

Prepping for electrical lines:

1. Drill wire access hole through the pack out about 2"-3" below the rain cap. Only drill the hole into the hollow portion of the wall. Your electrician should handle the hot feed to the switch box location. Be sure the electrician leaves at least 12" of wire outside the pack out for ease.
2. Measure distance from rain to access hole, transfer that measurement to the motor side of the backside of the shutter box, and drill a wire access hole.



MOUNTING SHUTTER BOX AND SIDE FRAMES

Be sure to double check combined height measurements of shutter box and side rails for proper fitment under the rain cap.

Installation of pack out:

1. Caulk both insides of the pack out and around wire hole
2. Insert pins from shutter box end caps into the top of the side rail mounting slot.
3. Stand shutter in leaning fashion, keeping your grip on shutter box, not allowing it to fall forward while standing frame work up.
4. Insert wire into wire hole on back side of shutter box you previously drilled.
5. Push shutter and guide rails firmly against the pack out.
6. Start to anchor the side rails of the shutter using the supplied self tapping screws in your accessories bag. Be sure to ensure the side rails are flush with outside of the pack out.
7. Anchor the shutter box to the pack out / wall through the two holes you drilled in the end caps in the prepping process.

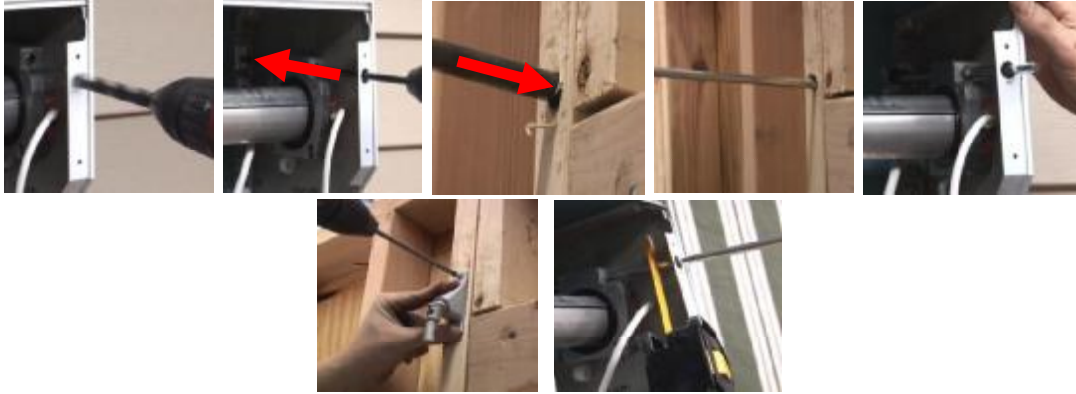


INSTALLATION OF THE UNIVERSAL GEAR ASSEMBLY

This is to be used only for manual shutters or any manual override shutters, if yours doesn't have either of the two skip this step.

Universal gear installation:

1. Drill ½" hole in front lip of shutter box end cap directly in front of gear insert for use of a drill bit.
2. Using a ¼" diameter, long drill bit through the shaft hole of the gear/motor shaft hole in towards the house until you penetrate the interior wall.
3. Using a ½" diameter, long drill bit run it through the hole you just made with the other bit until you exit into the shutter box, being careful not to hit the motor.
4. Slide the universal gear through the ½" hole in the house into the shaft hole on the gear/motor.
5. Mount the universal to the interior wall using provided #10 flat head screws.
6. Cut excess shaft on shutter box side off, using saw or bolt cutters to the needed length.



WIRING

Only use if motorized shutter

All electrical work should be performed by a licensed electrician.

Basic wiring:

Using provided wire clip, create a drip loop with motor cable to prevent water entering motor head

Connect hot feed to motor cable, using a UL approved waterproof fitting or waterproof junction box, all it subject to local building and fire codes.

Connect roll shutter switch



CURTAIN INSTALLATION

Recommend that you have an assistant for shutters larger than 6ft.

Dropping curtain:

1. Fix 1 safety plate to each side of end cap, using provided small Philips screws.
2. Cut bubble wrap and stretch wrap from curtain, then drop end slat part of curtain of axle. It's like hanging a bathroom towel over a rod.
3. Slowly feed curtain into side rails while unrolling the curtain.
4. Unroll until about half the curtain is in the side rails and it can hang by its own weight. Be aware that some packing support tubes might fall out from inside the curtain.
5. Slide provide easy click t straps onto male hook of top slat, then slowly push curtain the remainder of the way down.
6. Attach t-straps to the axle by push the z part of the strap in the groove on the axle, you should hear a slight click noise.
7. **Setting of the limits is needed, but this step will vary depending on operator selected. For a more stepped procedure please refer to your order form for motor type and visit our website for detailed instructions. Below is quick detail for standard motors only.**
STEP 8 IS ONLY NEEDED FOR MANUAL SHUTTERS
8. Install stoppers in bottom end slat by drilling a 1/4" hole, 3" in from each side and center of height on bottom slat. Then slide in bolt with plastic from back side of roll then screw into coned stopper. This will prevent the over rolling the curtain into the shutter box when shutter is manual operated.
9. Install front shutter box cover, using the 4 – 1/4" tek screws you removed earlier.



Quick Standard Motor Setting

At the motor end of the Roller Shutter you will see a Yellow and a White button. These are to set the stop position of the Roller Shutter at the fully open and fully closed position.



With both buttons depressed, you can now commence to set your 'up' and 'down' limits. It would be advisable to begin the limit setting with the curtain in the middle position and practice setting the limits until you are confident and comfortable with this procedure.

FINAL TOUCHES

These are a very important part of the overall appearance of the shutter, if not completed shutter will not look finished.

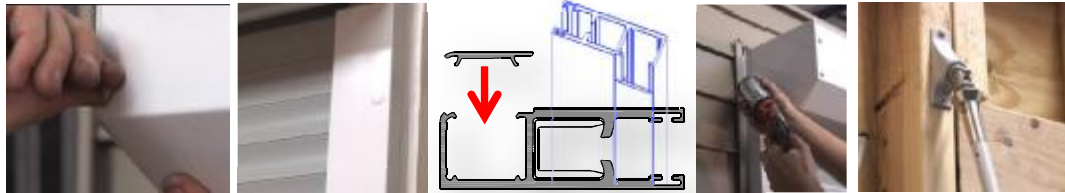
Finishing touches:

Install hex screws covers on shutter box cover

Install ½" hole plugs into side rail mounting holes, or if side rail has snap cap cover, insert outside edge of snap cap cover in to rail at an angle then firmly bang into anchor spacing on rail.

Caulk all parimeters of roll shutter to ensure no water can leak into door/window.

Attach crank handle to universal and check for workability.



ACCESSORIES BAG CONTENTS

These are the most common contents found in the accessories bag, which is located in each positions housing .

Basic accessories list:

1. Hex dome cap –used to cover hex screws on shutter box cover
2. ½" hole plugs – side rail anchor hole plugs
3. 5/16" Hex self tapping screw – used to attach side rail to pack out a
4. #8 Philips tapping screw – used to attach safety plates
5. #10 Phillips screw – used to mount gear universal assemble and crank handle clip
6. #10 wall anchors – only needed when mounting #10 screws to concrete / drywall
7. Cone stoppers – used to stop the curtain from rolling in box, only needed if manual
8. Shutter switch – needed to control motor shutter
9. Gear universal – used to operate manual shutter
10. Crank handle – used to operate manual shutter
11. Crank handle clip – used to hold crank handle
12. T- strap – used to attached curtain to roller tube



OUR OTHER GREAT PRODUCTS WE CAN OFFER YOU

ZIP TEX

- Garage Door Openings
- Restaurant Openings
 - Sunrooms
 - Windows
 - Gazebos
 - Porches



ACCORDIONS

- Hurricane rated
 - Balconies
 - Windows
 - Doors
 - Storefronts
- Any large opening



GRILLES

- Store fronts
 - Windows
- Gun shops
- Pharmacy's
 - Bar tops

